



Calcom Vision Limited

Corporate Profile 2025

Contents

The Calcom Journey

- A Brief Background
- History in Exports
- Our Beliefs & Philosophy
- R&D Achievements
- Quality & Customer Focus

Business Segments & Key Financials

- YOY and QOQ Financials
- EBITDA

Infrastructure

- On Ground
- In-House Facilities
- Plant & Machinery

Our Customers

- Domestic & International

Product Portfolio

- Indoor Lighting
- Outdoor Lighting
- Export Category
- BLDC Fans
- Certifications & Accreditations

The Team

- Leadership Team
- Board of Directors

The Calcom Journey



Calcom at a Glance

49+ years in Electronics manufacturing

Listed on the **Bombay Stock Exchange** since 1990

Operating in LED lighting space and supplying to some of the **Big names** in the Industry

ODM Business model with in-house development and ownership of designs, not bound to any particular customer.



Infrastructure available for substantial increase in **Electronics Manufacturing Services (EMS)** business along with Backward and Forward Integration.

Focusing on **Automation** to enhance Productivity & Capacities

Approved for **Production Linked Incentive (PLI)** Scheme for LED Components & Drivers

Diversifying into Futuristic and Energy Saving Products – **BLDC Fans, Smart Lighting (IoT), Solar Lighting**

1976



- Incorporated as Calcom Electronics to manufacture Calculators & Computers
- Exported 10,000 Calculators to NASA and 2,000 to Russian Space Program

1986



- Setup the Plastic Moulding division
- Began in-house development of plastic moulds

1990



- Went Public and got listed on the National Stock Exchange and Bombay Stock Exchange

1995



- Became the largest TV manufacturer in India and set up 12 factories across the country
- Clocked a group turnover of INR 450 Cr (USD 150 Million)

2002

- Collapse of Television Business due to change in technology
- Lost major customers in a span of 8 months

2020



- Started Mass Manufacturing of LED Bulbs and now catering to leading brands.
- Selected for the PLI Scheme

1982

- Diversified into manufacturing Televisions
- Pioneered the concept of OEM in India



1990

- Collaborated with Samsung Korea, to set up component manufacturing for backward integration



1992

- Exported TV's to Middle East and APAC countries under Samsung brand



1998

- Diversified into Domestic appliances
- Developed Vacuum Cleaners, Hand Mixers, Power Inverters etc.



2013

- Diversified into LED Lighting and developed a range of Fixtures & Luminaires



2023

- Expanding Business Segments to include EMS and diversifying into manufacturing BLDC Fans





1979

- Exported 10,000 Calculators to NASA and 2,000 to Russian Space Program



1995

- Exported Color TV's to APAC countries under the Philips Brand name.



2004

- Exported Color TV's to USA with UL approval



2016

- Exported LED Bulbs and Battens to UK



2017

- Exported Stage Light to OSRAM Germany

1992

- Exported B/W Televisions to Middle East, Africa and APAC countries under Samsung Brand.



2002

- Exported Color TV's to Europe and UK meeting IEC standards and CE Certified



2007

- Exported Fluorescent Lighting to neighboring countries such as Nepal, Sri Lanka & Bangladesh



2013

- Exported Downlighters to APAC countries under OSRAM brand.



2022

- Exported LED Bulbs and Led battens to Nepal and Middle East

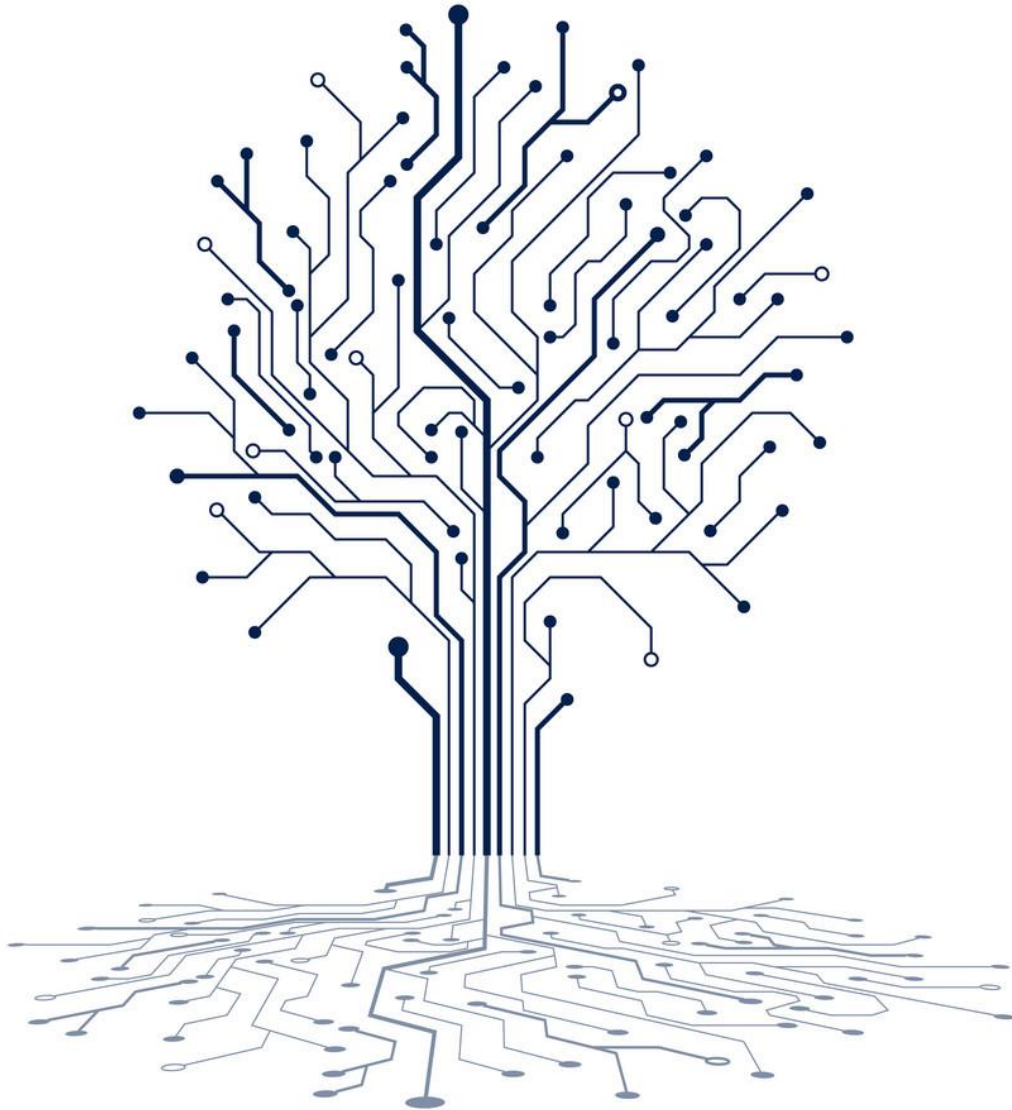


2023

- Started Exporting UL Approved Disk Light to USA



Our Beliefs & Philosophy



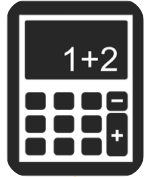
Our Beliefs

- **Individual Must Be Respected**
- **Customer must be given the best possible service**
- **Excellence and Superior Performance must be pursued**

Our Philosophy

“Committed to Excellence and Customer Satisfaction”

R&D Achievements



1st Indian company and 3rd company in the world to make Scientific Programmable Calculators. **Exported 10,000 to NASA and 2000 to The Russian Space Program.**



Calcom developed a **Patented Digital Clock** for Televisions



1st Indian Company to design Televisions **meeting UL and IEC standards** for European and US Markets

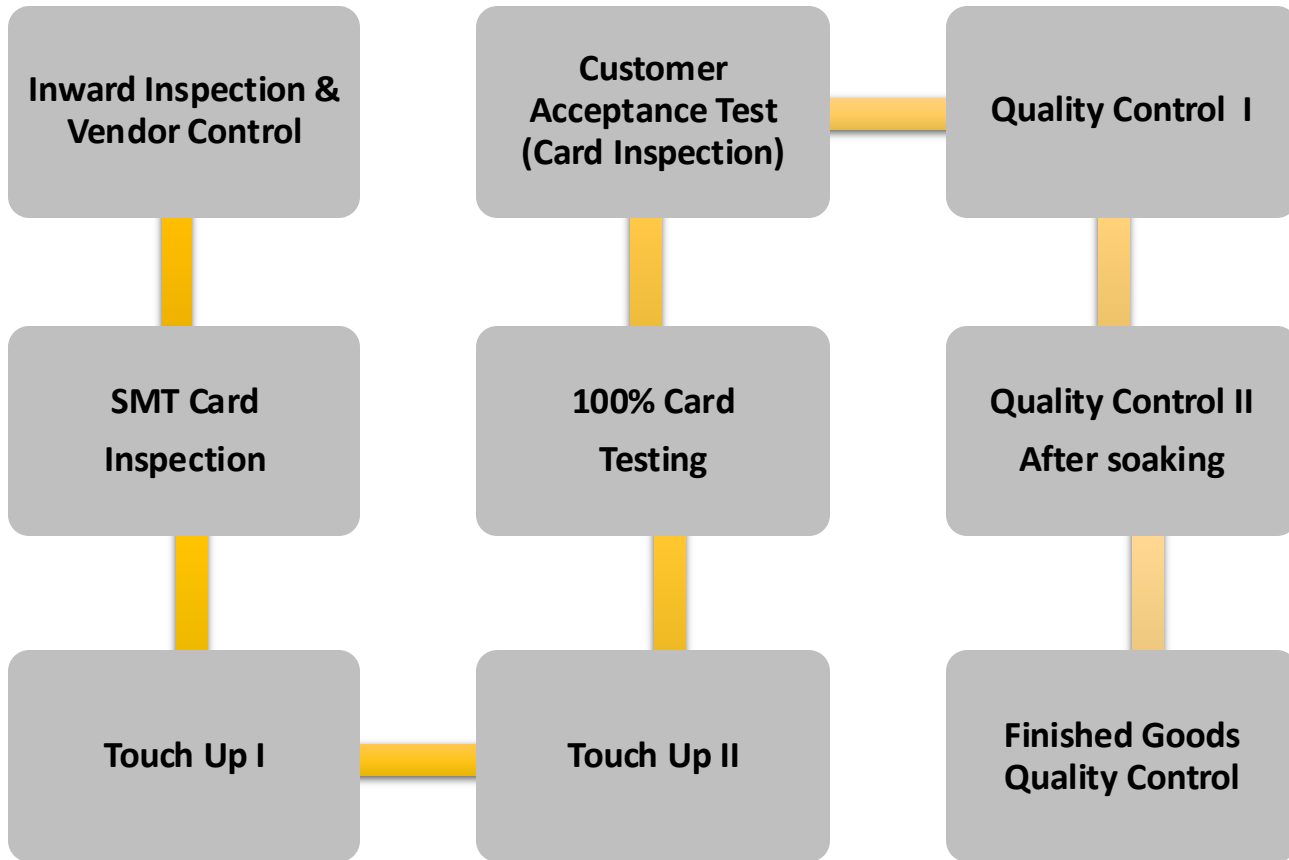


1st Indian company to design its own Color TV, meeting IEC standards & **approved by Philips Global Design Centre, Singapore**



Diversified into **Lighting Electronics** and have developed a range of products to cater to the **Domestic and International** market including Specialty Lighting Products

Quality Focus



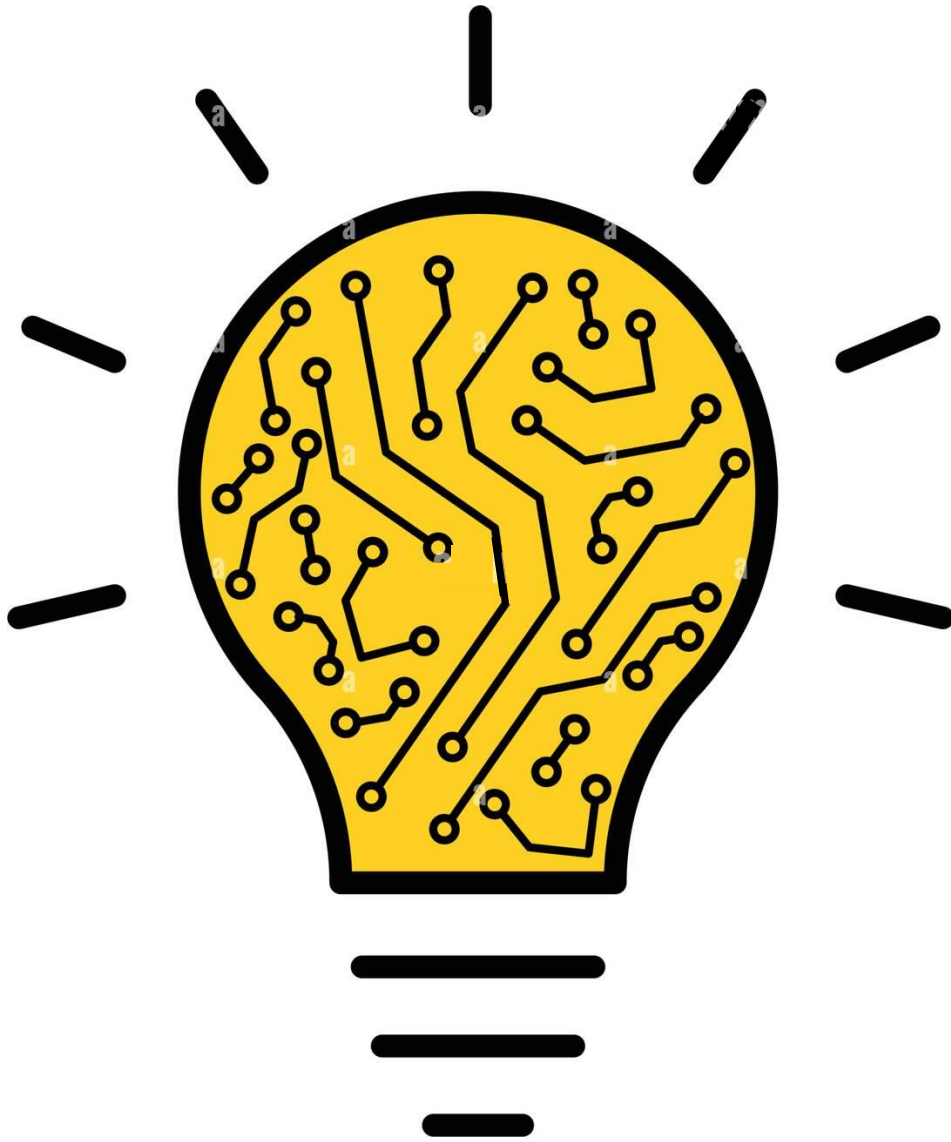
At Calcom, we have Multilevel Quality Control Procedures that ensure quality standards are being met at every stage of development enabling manufacturing of reliable products which meet International Quality Standards

Field defective LED products <1%

Our Quality Policy

‘We shall deliver **error-free, competitive** products and services, **on time**, to our customers that meet or exceed their expectations’

Customer Focus



At Calcom, we have always been a **Customer Focused** company. We believe in Long-term partnerships to serve and delight our customers.

Customer	Association
Philips – TV	18 years
BPL - TV	16 years
Osram - Lighting	12 years +
Panasonic - Lighting	06 Years +

Business Segments



LED Lighting



- Complete Range of Indoor & Outdoor products
- Catering to some of the largest Lighting Brands
- Exporting some products to USA and Middle East

Solar Products



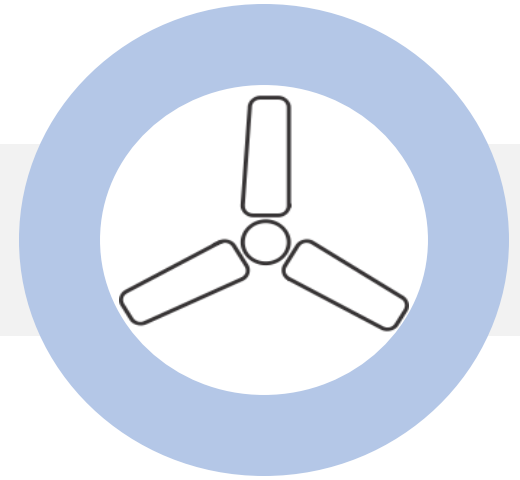
- Forayed into Solar Lighting in 2024
- Expanding Product portfolio to include Solar Street Lights
- Expanding portfolio to include Solar Garden Lights

EMS



- State-of-the-Art Infrastructure in place to cater to leading Electronics Brands
- Experience in Designing & Development
- Providing End-to-End Solutions

BLDC Fans & Drivers



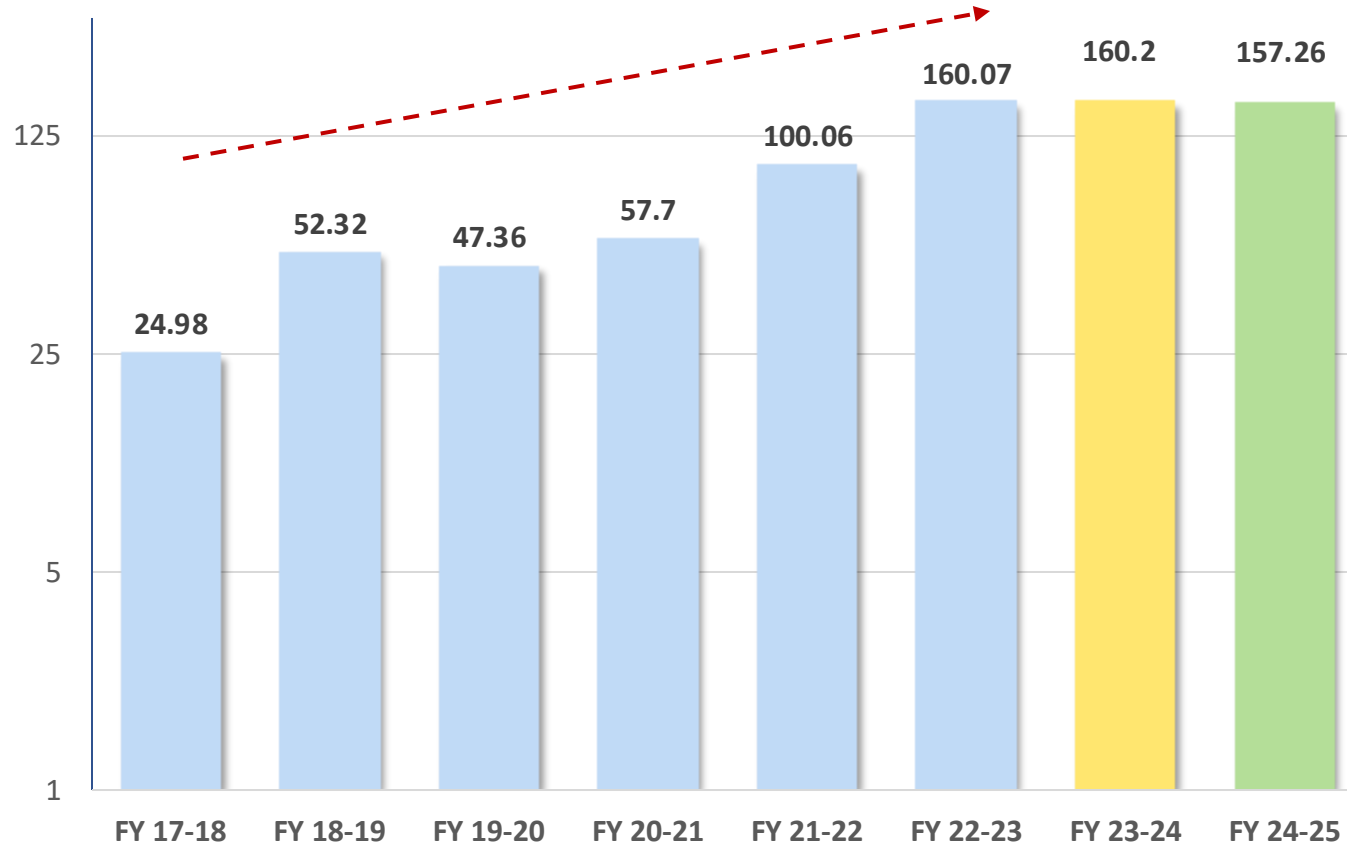
- New Vertical added in 2023 to de-risk business
- Inked a 50:50 Joint Venture with leading Korean company
- Plans to manufacture 100K Fans in Phase 1

Key Financials

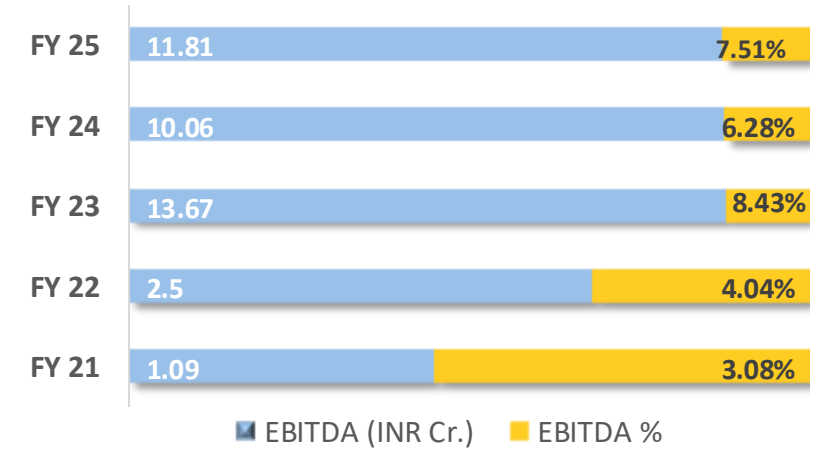


Annual Revenue (YOY)

(INR Cr.)

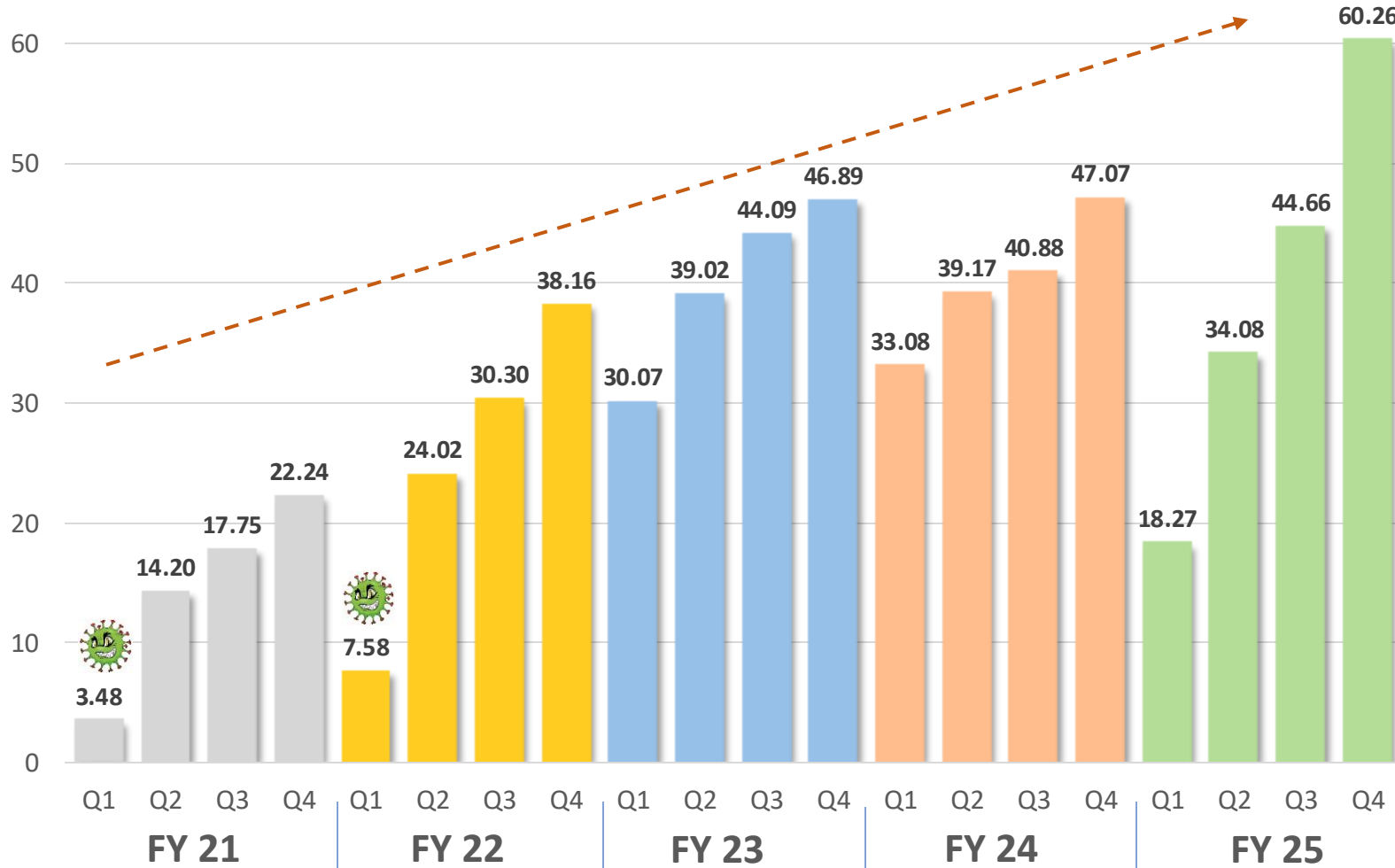


EBITDA



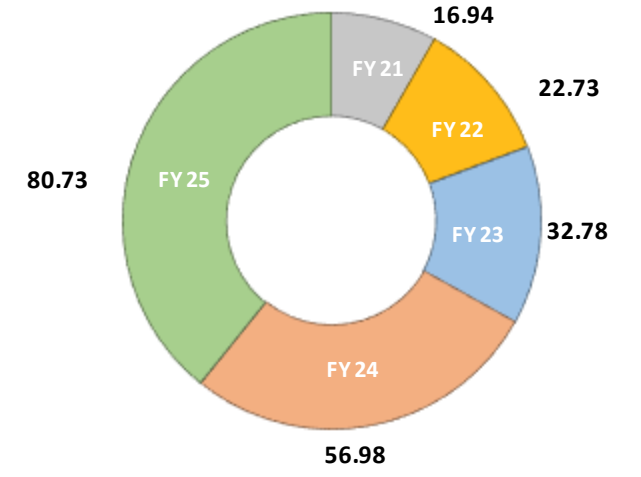
Quarterly Revenue (QOQ)

(INR Cr.)



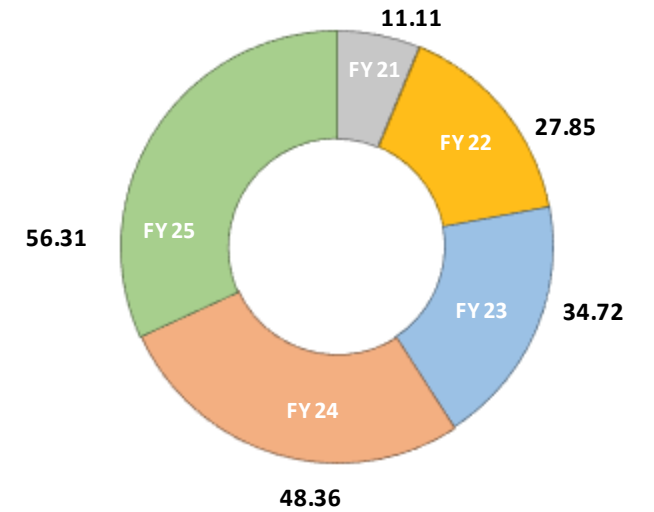
TANGIBLE GROSS BLOCK

(INR Cr.)



NET WORTH

(INR Cr.)



Fund Raising

In 2022, Calcom raised a Seed Investment Round of **INR 15 Cr** from Marquee Investors that included:

- **Massachusetts Institute of Technology, USA (MIT)**
- **Old Bridge Capital**
- **Promoters**

In 2023, Calcom raised further **INR 15 Cr** from Existing Investors to meet Capital Expenditure and Working Capital requirements for:

Growth In LED Business



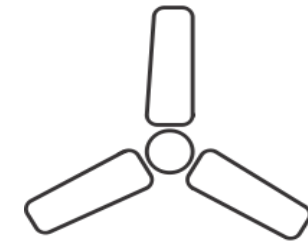
- Automation
- Enhancing Production Capacities-
3 Million Lamps/ month to
10 Million Lamps/ month

Growth In IoT products



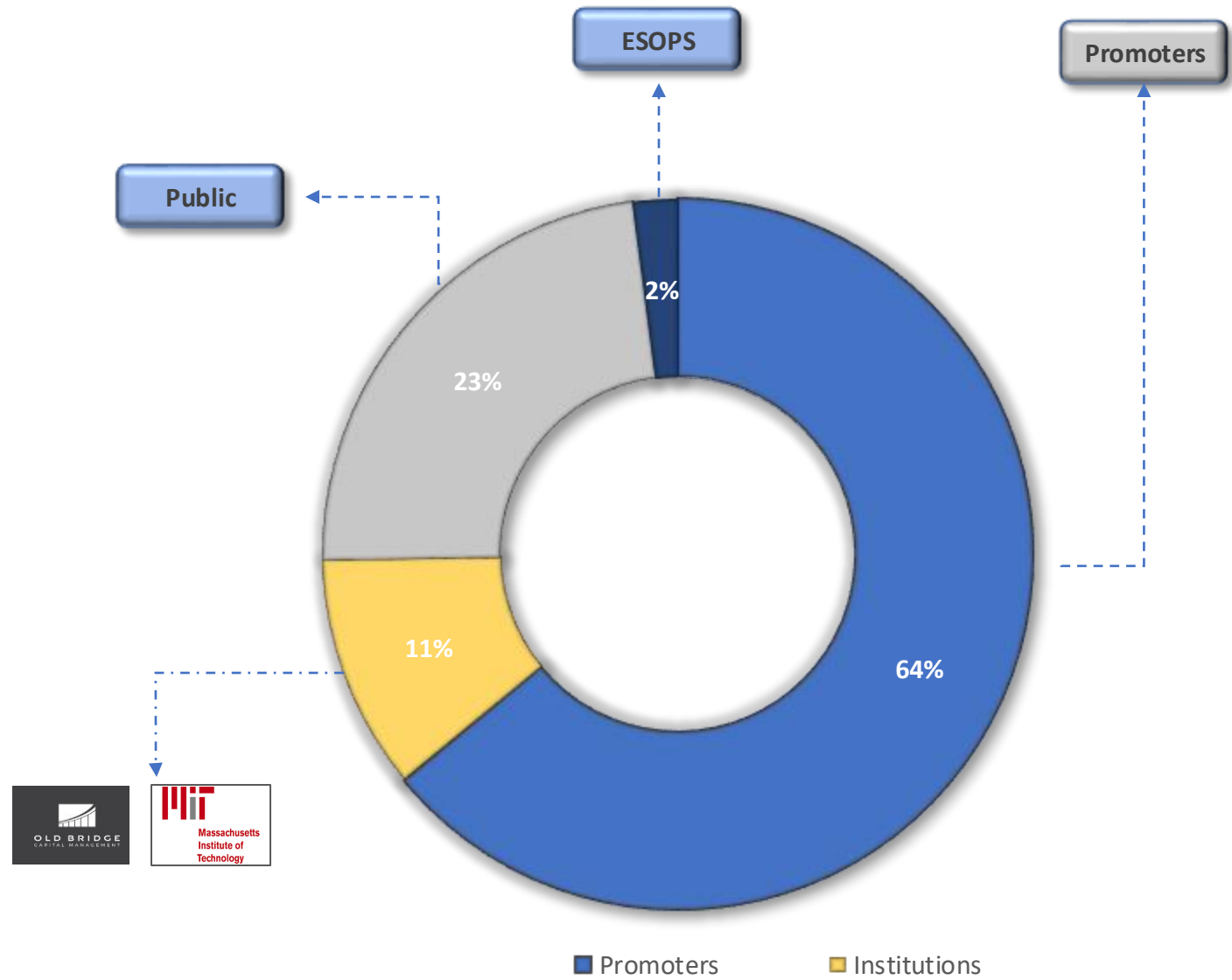
- Expanding product Portfolio of Smart Lighting
- Entering other Home Automation product segments such as Smart CCTV, Smart Locks etc

Diversification into BLDC Fan Manufacturing



- Setting up a new manufacturing facility
- Initial capacity of 100K Fans per month

Funding Raising + Equity Holding



The Infrastructure





On-Ground

- Factory Located at Greater Noida,
 - Area ~ **13,000 sq. mtr.**
 - Covered Area ~ **15,000 sq mtr.**
- Future Expansion ~ **30,000 sq. mtr**
- Proximity to New Delhi and upcoming **Freight Corridor**
- **500 KW** Power Back up
- **525KW Rooftop Solar Plant**



In-House Facilities

- **Tool Room** for Dyes & Moulds
- Well equipped **Approbation Lab**
- 3 Manual Insertion Lines
- 10 Final Assembly Lines with **Laser Printing & Automatic Packing** Machines
- In-House **Plastic Extrusion Plant**
- In-House **Powder Coating Plant**
- In-House **Pressure Die Casting**



Plant & Machinery

- **11 SMT Lines** with Automatic Printers and 10/12 Zone Reflow Ovens
- 3D Automatic Optical Inspection (**3D AOI**)
- **3** Automatic Bulb Assembly Lines
- **5** Plastic Injection Molding Machines
- **10** Automatic Ageing Machines
- **Battery Charging, Sorting & Grading** Setup
- **2 PDC Machines** (180T and 400T)



Our Customers



Panasonic

OPPLE
LIGHTING

GreatWhite
Electricals

BAJAJ
Bajaj Electricals Ltd.
Inspiring Trust

USHA

OSRAM

LEDVANCE

POLYCAB

nipo

sun king
From Greenlight Planet

Jaquar
LIGHTING

TRAXON | ecue
MEMBER OF PROSPERITY GROUP

ReneSola

wipro

HPL

amazon
basics

Flipkart
SmartBuy

BPL

cromā
A TATA Enterprise

Vinay
ELECTRICAL SOLUTIONS

zunroof
India's #1 Choice

OSRAM
Germany

Safonix

SMARTMESH

wyze

CG CHAUDHARY
GROUP

CAPITAL
LIGHTING FIXTURE COMPANY

JPM
JP MINDA GROUP
SINCE 1956

RR KÄBEL

EVEREADY

GEARUP
Switches You to the Next Level

GIRISH

ORBIT
THE POWER OF PEOPLE
WIRES & CABLES

LEDURE
LED Lights

Calcom

Strictly Private and Confidential

Product Portfolio



Deco Bulbs

0.5W

Low Wattage LED Bulbs

3W

5W

7W

9W

12W

15W

Mid Wattage LED Bulbs

18W

23W

26W

High Wattage LED Bulbs

30W

40W

50W

60W



Surge 4KV/ 440V Protection



BIS Approved



3000K, 4000K, 6500K



Operating Voltage 100-300 VAC



100 Lumens/ Watt



Power Factor >0.95*

Plastic Batten

5W

10W

20W

22W

24W

36W

40W

45W - Hexagon

Aluminum Batten

20W

36W

40W

60W

Industrial Batten (IP20 | IP65)

36W

40W



Surge 4KV/ 440V Protection



BIS Approved



3000K, 4000K, 6500K



Operating Voltage 100-300 VAC

100 Lumens/ Watt



Power Factor >0.95*

Strictly Private and Confidential

LED Inverter Bulb

9W

12W

LED Inverter Batten

20W



Upto 4
Hours
Backup



Surge 4KV/ 440V Protection



BIS Approved



3000K, 4000K, 6500K



Operating Voltage 100-300 VAC



100 Lumens/ Watt



Power Factor >0.95*

LED Smart Bulbs

9W

12W

LED Smart Batten

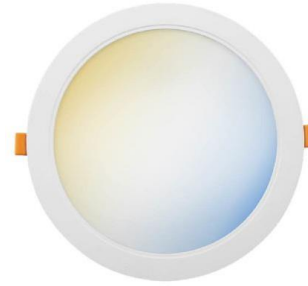
20W

LED Smart Downlighter

10W

15W

Calcom®



Google home



amazon alexa
WiFi Smart Bulb



** Available in 2 Ch and 5 Ch*



Surge 4KV/ 440V Protection



Operating Voltage 100-300 VAC



BIS Approved



100 Lumens/ Watt



16 Million Colors



Power Factor >0.95*

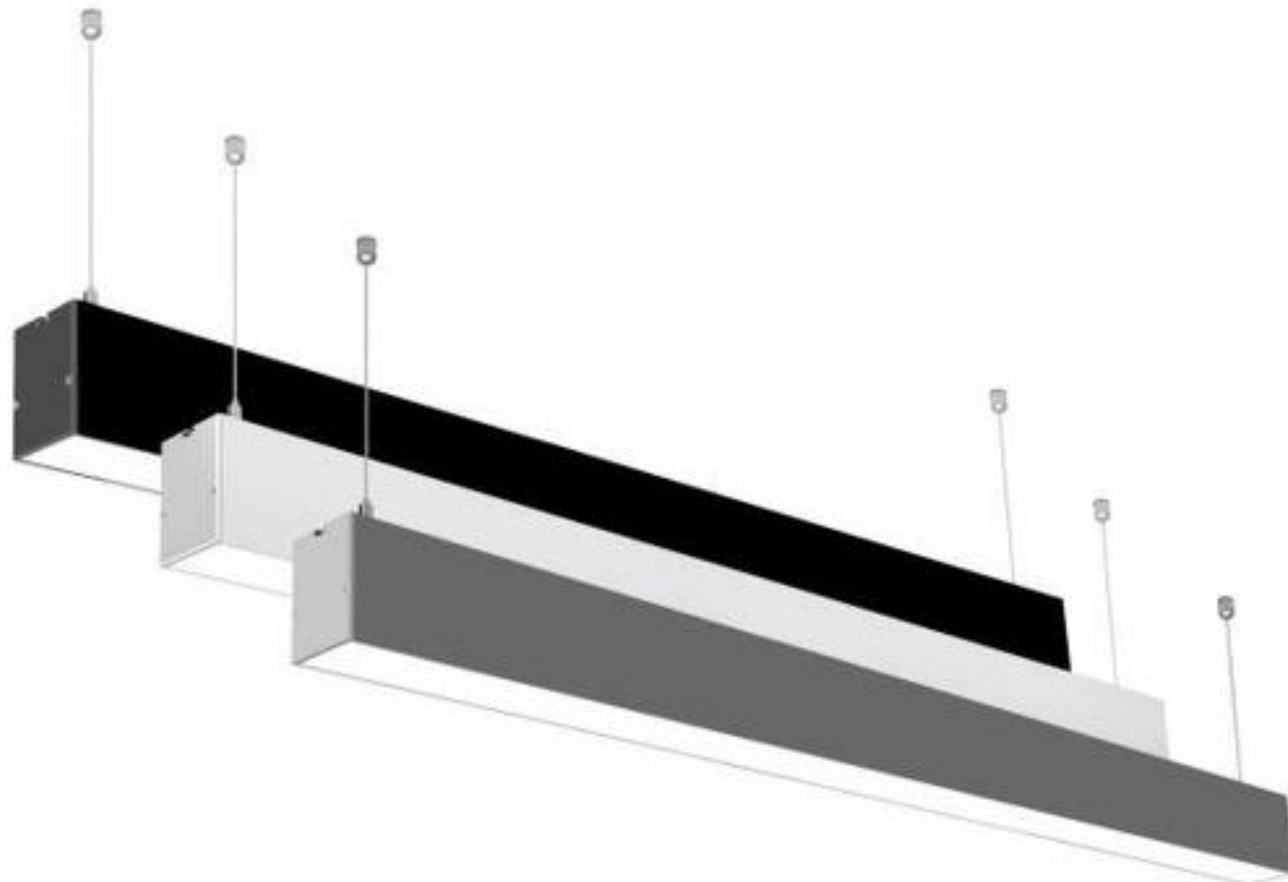
Strictly Private and Confidential

LED Linear Suspended Light

20W

30W

* Available in 2 Ft and 4 Ft



Surge 4KV/ 440V Protection



Operating Voltage 100-300 VAC



BIS Approved



100 Lumens/ Watt



3000K, 4000K, 6500K

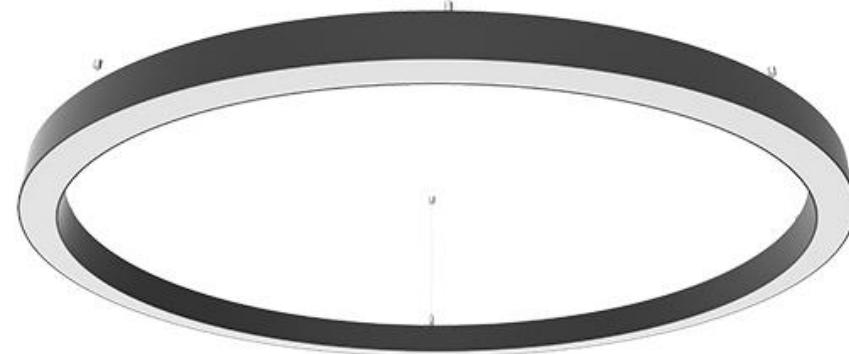


Power Factor >0.95*

LED Linear Suspended Light

20W

30W



Surge 4KV/ 440V Protection



Operating Voltage 100-300 VAC



BIS Approved



100 Lumens/ Watt



3000K, 4000K, 6500K



Power Factor >0.95*

* Shapes can be customized as per Customer Requirement

Calcom®

Strictly Private and Confidential

LED PC Downlighter

5W

10W

15W

20W

LED Surface Downlighter

6W

12W

18W

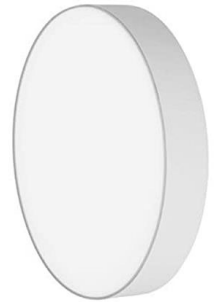
LED Aluminum Downlighter

6W

12W

18W

24W



Surge 4KV/ 440V Protection



Operating Voltage 100-300 VAC



BIS Approved



100 Lumens/ Watt



3000K, 4000K, 6500K



Power Factor >0.95*

Strictly Private and Confidential

LED Concealed Light

3W

5W

7W

LED Striker Light

3W

5W

LED Spot Light

2W



Surge 4KV/ 440V Protection



BIS Approved



3000K, 4000K, 6500K



Operating Voltage 100-300 VAC



100 Lumens/ Watt



Power Factor >0.95*

Strictly Private and Confidential

LED 1x1 Panel

24W

LED 2x2 Panel

36W

40W

LED 1x4 Panel

36W

40W

LED 2x4 Panel

48W

60W

Calcom®



Surge 4KV/ 440V Protection



BIS Approved



3000K, 4000K, 6500K



Operating Voltage 100-300 VAC



100 Lumens/ Watt



Power Factor >0.95*

Strictly Private and Confidential

LED High Bay (IP65)

100W

150W

200W

LED Bulk Head (IP65)

10W

LED Well Glass (IP65)

35W

60W



Surge 4KV/ 440V Protection



BIS Approved



3000K, 4000K, 6500K



Operating Voltage 100-300 VAC



100 Lumens/ Watt



Power Factor >0.95*

Strictly Private and Confidential

LED Flood Light (IP65)

20W

30W

50W

70W

100W

150W

200W

LED Flood Light with Lens (IP65)

20W

30W

50W

70W

100W

150W

200W



Surge 4KV/ 440V Protection



BIS Approved



3000K, 4000K, 6500K



Operating Voltage 100-300 VAC



100 Lumens/ Watt



Power Factor >0.95*

LED Street Light Professional (IP65)

20W	25W	30W
35W	45W	60W

LED Street Light Trade (IP65)

15W	25W	45W
60W	75W	100W

LED Street Light DOB (IP65)

15W	25W	45W
60W	75W	100W



Surge 4KV/ 440V Protection



BIS Approved



3000K, 4000K, 6500K



Operating Voltage 100-300 VAC



100 Lumens/ Watt



Power Factor >0.95*

LED PAR Light (IP20 | IP65)

100W

150W

LED Façade Light (IP65)

60W

100W

200W



Surge 4KV/ 440V Protection



Operating Voltage 100-300 VAC



DMX/ Wifi Controlled



100 Lumens/ Watt



IP65 Rated



Power Factor >0.95*

SOLAR All In One Street Light (IP65)

30W

45W

60W

80W

100W

160W



Shoebox Area Light

- 100W
- 150W
- 200W
- 240W
- 300W



3 x CCT and 3x Power Tunable



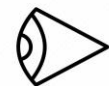
Dusk to Dawn Sensor



Zhaga/ NEMA Sensor



>150 Lumens/ Watt



T2, T3, T4 and T5



100-277V, 120-347V, 200-480V



UFO High Bay Light

100W

150W

200W

240W

300W



3 x CCT and 3x Power Tunable



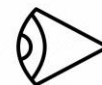
Dusk to Dawn Sensor



Zhaga Sensor



>160 Lumens/ Watt



Beam Angles 60/90/120



100-277V, 120-347V, 200-480V

Strictly Private and Confidential



Linear High Bay Light

100W

150W

200W

240W

300W



3 x CCT and 3x Power Tunable



Zhaga Sensor



Beam Angles 60/90/120



Dusk to Dawn Sensor



>150 Lumens/ Watt



100-277V, 120-347V, 200-480V

Strictly Private and Confidential



Linear Low Bay Light

20W

40W

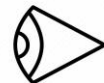
80W



5x CCT and 5x Power Tunable



Microwave/ PIR Sensor



Beam Angles 60/90/120



Dusk to Dawn Sensor



>140 Lumens/ Watt



100-277V, 120-347V

Strictly Private and Confidential



Wall Packs

40W

60W

80W

100W

120W

150W



3x CCT and 4x Power Tunable



Microwave/ PIR/ Photo-Cell Sensor



Semi and Full Cut-Off Available



>150 Lumens/ Watt



100-277V, 120-347V



Flood Light

30W

60W

80W

100W

120W

150W



3x CCT and 3x Power Tunable



Microwave/ PIR/ Photo-Cell Sensor



>130 Lumens/ Watt



100-277V, 120-347V

Strictly Private and Confidential



LED Bulbs

8W

12W



>100 Lumens/ Watt



90-110V

Strictly Private and Confidential



BLDC Fans Eco Range

35W



BLDC Fans Pro Range

35W



BLDC Decorative Fans Pro Range

35W



Calcom is an
ISO 9001:2015
ISO 14001:2015
SA 8000:2014
 compliant organization



The Team



Calcom Leadership Team



Sushil K Malik
CHAIRMAN &
MANAGING DIRECTOR

Mr. Sushil Kumar Malik is the Founder, Chairman and Managing Director of Calcom. An Electronics Engineer from Delhi College of Engineering and an M.B.A. from FMS, Delhi.

He has over four decades of rich experience in the electronics and lighting industry. A trail blazer, he was always ahead of his time. He has led Calcom since its inception. Besides overseeing all the operational functions, his primary focus is the company's Vision & Strategic Planning and Research and Development.



Abhishek Malik
EXECUTIVE DIRECTOR

Mr. Abhishek Malik is the Executive Director at Calcom. He graduated from Macquarie University, Sydney, Australia followed by an MBA from IE Business School, Madrid.

He has over 17 years of working experience across the Consulting and Service Industry. He co-founded a start-up in the Automotive space before joining Calcom. At Calcom, he is looking after Strategy, Marketing and Investor Relations. He is also managing the Smart/ IoT business vertical of Calcom.



Debashish Mukherjee
CHIEF EXECUTIVE OFFICER

Mr. Debashish Mukherjee is the Chief Executive Officer at Calcom. He is an Electronics Engineer and a topper of his University. He has 35 Years of proven experience in different fields like Product/Process/Quality management, setting up of manufacturing units, Supplier Management, Portfolio Planning etc.

He was last appointed as Director/Head of Innovation & Design Quality for Professional Lighting Business Group of Philips Lighting India (now known as Signify Innovations India Ltd).



**All Support functions are headed by Seasoned Professionals
with 25+ years of working experience in the Lighting/
Electronics Industry**

Board of Directors



Mr. Sunder Hemrajani
Independent Director

Mr. Sunder Hemrajani is an alumnus of Harvard Business School. He completed his MBA from FMS, Delhi and Graduated in Mechanical Engineering from Delhi College of Engineering (DCE). He has over 35 years of varied experience in Sales, Marketing and General Management functions in leading Companies like Hindustan Unilever, Whirlpool, PepsiCo, Reliance Capital and Times. He retired as Managing Director of Times Innovative Media Ltd.



Mr. Ashok Kumar Sinha
Independent Director

Mr. A K Sinha - M.Sc in Chemistry from the Indian Institute of Technology, Kharagpur, India,. He has 39 years of experience in a wide range of positions in the tax administration, audit, collection & specialized investigation of tax frauds as well as international taxation. He was the Vice chairman of the Income Tax Settlement Commission and completed four years as The Chief Commissioner and later as the Principal Chief Commissioner of Income Tax. Since 2012, he has also been consulting for the IMF and The World Bank.



Ms. Parvathy Venkatesh
Non-Executive Independent

Ms. Venkatesh has done her B.Com (Hons), FCMA, USA). She is associated with Ramanath Iyer & Co (RNI & Co.)- a leading firm for cost accountants in Delhi. She has a rich professional experience spanning over 20 years in diverse areas of Cost Audits, Consulting, Internal Audits and system implementation in many large companies. She has worked in various industries including Textiles, Sugar, Cement, Automobile, Auto Ancillaries, Paper, Consumer Electronics etc. She is also a Consultant to the Ministry of Housing & Urban Affairs on the financial evaluation of RFD projects.



Mr. Naresh Kumar Jain
Non-Executive
Independent Director

Mr. Naresh Kumar Jain has an industry experience of over 44 years which includes more than 30 years of managerial experience in senior positions. He has been Director Legal & Compliance for a large listed entity for 5+ years. He was the Chairman of NIRC (1992) and Council Member of The Institute of Company Secretaries of India (1995-1997). He has also been the Secretary and CEO of The Institute of Company Secretaries of India (2003-2012). He has been member of various committees and groups of apex industry associations, government/regulatory bodies, academic institutions, international associations including the MCA, Planning Commission, SEBI, NFCG, IGONU, IFCS, CSIA



Mr. Lajpat Rai Gupta
Non-Executive
Independent Director

Mr. Lajpat Rai Gupta is an energetic Top Management Executive with extensive hands-on experience in Management, Business Leadership and working with Board of Directors, Banks, Investors, Government Bodies and has proven talent in managing and motivating teams of loyal and productive employees. Leader who uses an “out-of-the-box” approach to Problem Solving, and consistently drives bottom-line performance, Efficiency, Process and Profit Improvements. Strategic & Rich experience in Accounting & Financial management. He has deep experience in developing & implementing financial controls and processes besides Productivity improvements & Change Management Industry Expertise in negotiating RLNG/Natural Gas Sale–Purchase Contracts at the competitive terms.



Thank You

Disclaimer

This presentation may contain “forward-looking statements” by “Calcom Vision Limited” that are not historical in nature.

Such forward-looking statements are subject to certain risks and uncertainties such as government actions, local, political or economic developments, technological risks, and many other factors that could cause actual results to differ materially from those contemplated by the relevant forward-looking statements.

“Calcom Vision Limited” will not be in any way be responsible for any action taken based on such statements and undertakes no obligation to publicly update these forward looking statements to reflect subsequent events or circumstances. The images used in this presentation are taken from the open sources and it will be not used for commercial purposes. This presentation is for internal purposes and not for circulation.